

## Hexagonal Cap

The Hexagonal Cap, also known as a Threaded Pipe Cap, is designed to close the end of a male-threaded pipe or fitting to prevent flow or contamination. Featuring a hex-shaped head, it allows for easy tightening or removal using a standard wrench. This cap ensures long service life, corrosion resistance, and compatibility with a variety of process media.

### KEY FEATURES:

- Material: Stainless Steel AISI 304 and AISI 316
- Type: Female Threaded Pipe Cap
- Thread Type: Rp according to EN 10226-1 & ISO 7-1
- Pressure Rating: ND 20 bar at 20°C (PN 20)
- Temperature Range: -20°C to 200°C
- Finish: Shot-blasted or polished surface
- Construction: One-piece, corrosion-resistant body



### **Benefits:**

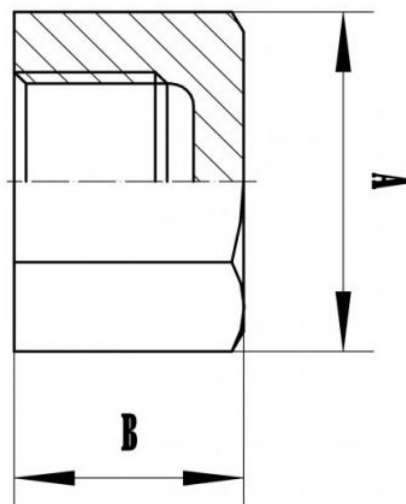
- Provides a tight seal to terminate threaded pipe systems
- Hexagonal shape allows easy installation in tight spaces
- Prevents leaks, contamination, or pressure loss
- Ideal for permanent or temporary closure
- High resistance to pressure, heat, and corrosion

### APPLICATION:

The Hexagonal Cap is used to seal the end of male-threaded pipes or fittings, preventing the escape of fluids or gases and protecting the internal threads from contamination or damage. Its hexagonal shape allows easy installation and removal using a standard wrench, making it highly versatile across various industries.

- Piping System End Closure
- Pressure Testing
- Maintenance Isolation
- Chemical & Petrochemical Plants
- Compressed Air & Pneumatic Systems
- Steam & High-Temperature Lines
- Marine & Offshore Installations

## **DRAWINGS AND DIMENSIONS:**



Unit: mm		
Size	A	B
1/4"	16.00	15.00
3/8"	19.50	15.40
1/2"	24.00	17.10
3/4"	29.50	18.50
1"	36.50	21.00
1 1/4"	45.50	23.70
1 1/2"	52.00	23.70
2"	64.00	27.50
2 1/2"	81.00	31.70
3"	94.50	35.10
4"	120.50	41.60

The information presented above is intended for general reference and product selection purposes. Specifications, features, and applications may vary depending on manufacturer and specific model.

Please consult the product manual or contact the supplier for detailed technical data and guidance tailored to your requirements. All images and descriptions are for illustrative purposes only and may not fully represent the actual product design.

Thank you!