

3-Way ball valves with T- or L-port **PN 63 PSI 1000**

The 3-way ball valves with T- or L-port configurations offer multi-directional flow control in a compact form. Designed with an ISO 5211 mounting pad, they are ideal for automation with pneumatic or electric actuators. Suitable for high-pressure systems up to PN 63 (1000 PSI).

KEY FEATURES:

- **High Pressure Rating:** PN 63 / 1000 PSI for demanding industrial applications.
- **Flow Configurations:**
 - **T-Port** (3-way mixing/diverting)
 - **L-Port** (2-way diverting/selecting)
- **ISO 5211 Mounting Pad:** Direct actuator mounting without brackets.
- **Connection Types:** Threaded acc. To EN 10226-1 & ISO 7-1
- **Full Port Design:** Ensures unrestricted flow with minimal pressure drop.
- **Blow-Out Proof Stem:** Enhanced safety under high pressure.
- **Anti-Static Device:** Ensures electrical continuity between ball, stem, and body.
- **Lockable Handle Option:** For manual operation and safety
- **Leak-Proof Sealing:** PTFE or reinforced seats available for tight shutoff

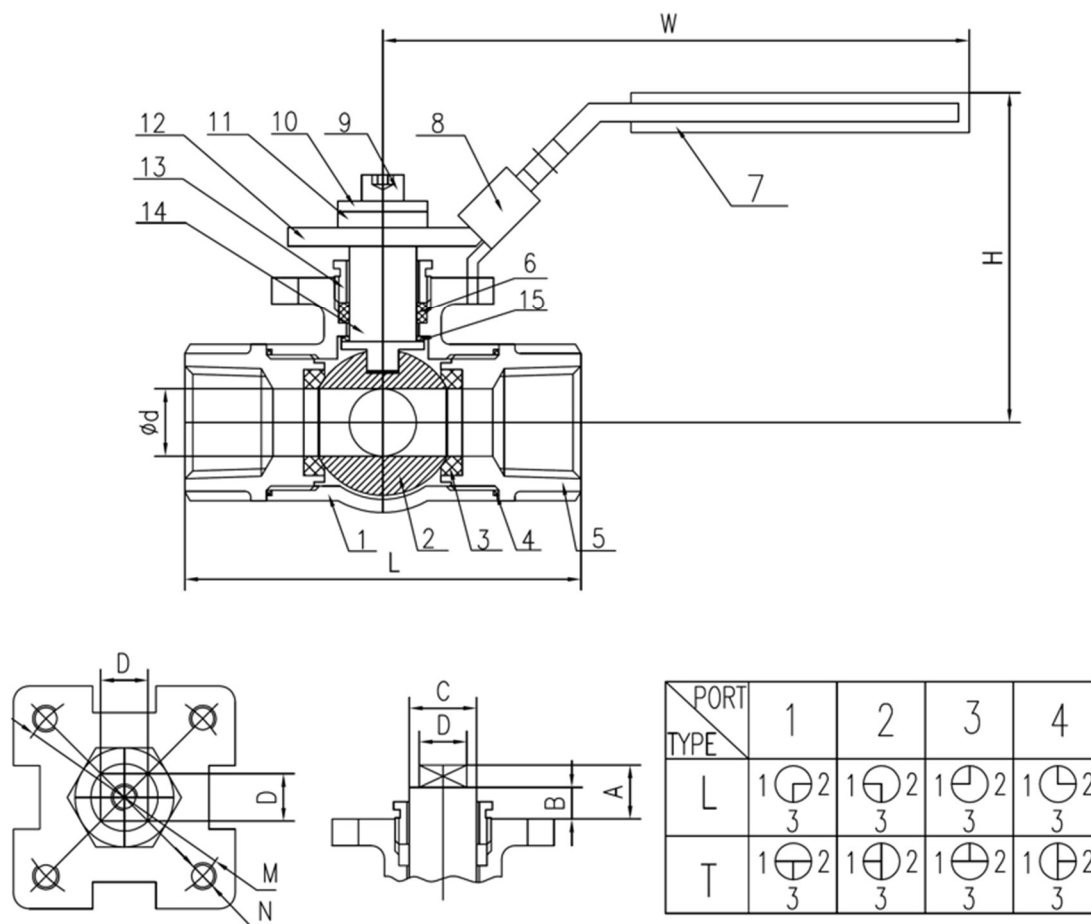


APPLICATION:

3-way ball valves with T- and L-port configurations are used in high-pressure systems requiring flow diversion, mixing, or distribution. They are ideal for automation and reliable in harsh operating environments.

- Chemical and Petrochemical Processing
- Fluid & Gas Distribution Systems
- Oil & Gas Industry
- Chemical and Petrochemical Plants
- HVAC Systems
- Water & Wastewater Treatment
- Power Plants & Energy Systems
- Food and Beverage Processing

DRAWINGS AND DIMENSIONS:



Unit: mm

Size	Ø d	L	B	D	C	A	W	H	M	N	TORQUE Kgf-cm	CV Factor	Hand lever screw
DN8 1/4"	12.7	65.0	6.0	9.0	12.7	10.2	132.0	60.0	42.0	M5 x 0.8	68.0	7.80	M5
DN10 3/8"	12.7	65.0	6.0	9.0	12.7	10.2	132.0	60.0	42.0	M5 x 0.8	68.0	7.80	M5
DN15 1/2"	12.7	65.0	6.0	9.0	12.7	10.2	132.0	60.0	42.0	M5 x 0.8	68.0	9.50	M5
DN20 3/4"	16.0	77.0	6.0	10.7	15.0	16.0	155.0	73.0	50.0	M6 x 1.0	105.0	14.0	M6
DN25 1"	20.0	93.0	7.5	10.7	15.0	18.0	155.0	80.0	50.0	M6 x 1.0	196.0	26.0	M6
DN32 1 1/4"	25.0	105.0	7.5	10.7	15.0	18.0	155.0	85.0	50.0	M6 x 1.0	266.0	43.0	M6
DN40 1 1/2"	32.0	124.0	8.5	14.0	20.0	19.0	210.0	103.0	70.0	M8 x 1.25	363.0	70.0	M6
DN50 2"	38.0	143.0	8.5	14.0	20.0	19.0	210.0	110.0	70.0	M8 x 1.25	500.0	102.0	M6

Swiss Fittings Argentina

Telefon: +54 9 341 685 3540

E-Mail: info@swiss-fittings.com.ar | Website: www.swiss-fittings.com.ar



PART AND MATERIAL LIST:

Sr. No.	Part Name	Material	Qty
1	BODY	ASTM-A351-CF8M	1
2	BALL	ANSI 316	1
3	BALL SEAT	PTFE	4
4	END SEALS	PTFE	2
5	END CAP	ASTM-A351-CF8M	2
6	STEM PACKING	PTFE	1
7	HANDLE SLEEVE	P.V.C.	1
8	LOCK	AISI 304	1
9	HANDLE NUT	AISI 304	1
10	WASH	AISI 304	1
11	HANDLE WASHER	AISI 304	1
12	HANDLE	AISI 304	1
13	GLAND	AISI 304	1
14	STEM	AISI 316	1
15	THRUST WASHER	PTFE	1

The information presented above is intended for general reference and product selection purposes. Specifications, features, and applications may vary depending on manufacturer and specific model.

Please consult the product manual or contact the supplier for detailed technical data and guidance tailored to your requirements. All images and descriptions are for illustrative purposes only and may not fully represent the actual product design.

Thank you!