

Union conical seat F/F

The Union Conical Seat F/F is a three-piece pipe fitting designed to join two female-threaded pipe sections while allowing for easy disconnection and reassembly. It features a conical metal-to-metal seat, which ensures a secure, leak-tight seal even under high pressure or temperature variations. The union body consists of two female ends and a central nut that allows easy installation without rotating the connected piping.

KEY FEATURES:

- Material: Stainless Steel AISI 304 and AISI 316
- Type: Threaded Union (Female x Female)
- Thread Type: Rp according to EN 10226-1 & ISO 7-1
- Pressure Rating: ND 20 bar at 20°C (PN 20)
- Temperature Range: -20°C to 200°C
- Finish: Shot-blasted or polished surface



Benefits:

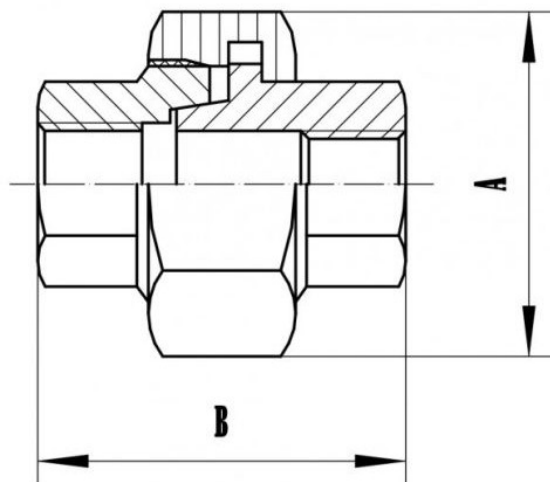
- Provides a strong, reliable, and reusable connection
- Conical seat ensures leak-proof sealing without additional gaskets
- Allows for fast assembly and disassembly without disturbing adjacent piping
- Excellent corrosion and pressure resistance
- Ideal for sanitary and high-purity process systems

APPLICATION:

The Union Conical Seat F/F is widely used in piping systems that require reliable sealing, easy assembly/disassembly, and reusable connections. Its conical metal-to-metal seat ensures a leak-proof joint without the need for additional sealing materials, making it ideal for high-pressure and sanitary applications.

- Food, Beverage & Dairy Processing
- Pharmaceutical & Cosmetic Industries
- Chemical & Petrochemical Plants
- Water Treatment & Filtration Systems
- Steam & Condensate Lines
- HVAC and Process Piping
- General Industrial Applications

DRAWINGS AND DIMENSIONS:



Unit: mm		
Size	A	B
1/4"	29.00	33.30
3/8"	34.00	35.30
1/2"	37.50	37.40
3/4"	44.50	40.50
1"	53.50	50.30
1 1/4"	64.00	52.00
1 1/2"	71.50	56.30
2"	85.50	62.80
2 1/2"	102.00	66.50
3"	117.00	70.20
4"	147.00	76.50

The information presented above is intended for general reference and product selection purposes. Specifications, features, and applications may vary depending on manufacturer and specific model.

Please consult the product manual or contact the supplier for detailed technical data and guidance tailored to your requirements. All images and descriptions are for illustrative purposes only and may not fully represent the actual product design.

Thank you!