

Elbows 90° Welded (3A)

The 90° Welded Elbow is a high-purity sanitary fitting designed for use in piping systems where clean and smooth directional changes are required. Manufactured in compliance with 3A Sanitary Standards, it is ideal for industries requiring stringent hygiene, including food, beverage, dairy, pharmaceutical, and biotech applications.

KEY FEATURES:

- **Standard:** 3A Sanitary Standard for hygienic processing systems
- **Design:** 90-degree bend for smooth flow redirection
- **Connection Type:** Butt Weld Ends for permanent sanitary piping installations
- **Material:** AISI 304 or 316L Stainless Steel
- **Finish:**
 - Internal Surface: $Ra \leq 0.8$
 - External Surface: Polished
- **Construction:** Seam-welded or fully welded, bead-removed and polished

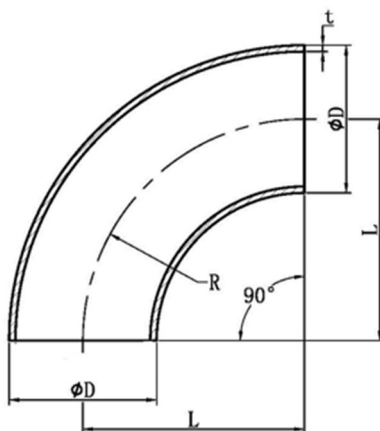


APPLICATION:

It is widely used in industries that require strict sanitary conditions, including:

- Dairy Processing:
- Beverage Industry:
- Food Processing:
- Pharmaceutical and Biotech:
- Cosmetics and Personal Care Products:
- Chemical Processing (Sanitary Grade):

DRAWINGS AND DIMENSIONS:



| Unit: mm | | | | | | |
|-----------------------|--------|------------------|--------|---------------|----------------------|----------|
| Size | D | L (+/-0.5 mm) | R | t (+/-10%) | Surface roughness | Polished |
| 1/2" 12,7 x 1,5 mm | 12.70 | 19.10 | 19.10 | 1.50 | 0.8µm | 240Grit |
| 3/4" 19,05 x 1,5 mm | 19.10 | 28.50 | 28.50 | 1.50 | 0.8µm | 240Grit |
| 1" 25,4 x 1,5 mm | 25.40 | 38.10 | 38.10 | 1.50 | 0.8µm | 240Grit |
| 1" 25,4 x 1,65 mm | 25.40 | 38.10 | 38.10 | 1.65 | 0.8µm | 240Grit |
| 1 1/4" 31,75 x 1,5 mm | 31.80 | 47.70 | 47.70 | 1.50 | 0.8µm | 240Grit |
| 1 1/2" 38,1 x 1,5 mm | 38.10 | 57.20 | 57.20 | 1.50 | 0.8µm | 240Grit |
| 1 1/2" 38,1 x 1,65 mm | 38.10 | 57.20 | 57.20 | 1.65 | 0.8µm | 240Grit |
| 1 3/4" 44,45 x 1,5 mm | 44.45 | 57.20 | 57.20 | 1.50 | 0.8µm | 240Grit |
| 2" 50,8 x 1,5 mm | 50.80 | 76.20 | 76.20 | 1.50 | 0.8µm | 240Grit |
| 2" 50,8 x 1,65 mm | 50.80 | 76.20 | 76.20 | 1.65 | 0.8µm | 240Grit |
| 2 1/2" 63,5 x 1,5 mm | 63.50 | 95.30 | 95.30 | 1.50 | 0.8µm | 240Grit |
| 3" 76,2 x 1,5 mm | 76.20 | 114.30 | 114.30 | 1.50 | 0.8µm | 240Grit |
| 3" 76,2 x 2,0 mm | 76.20 | 114.30 | 114.30 | 2.00 | 0.8µm | 240Grit |
| 4" 101,6 x 1,5 mm | 101.60 | 152.40 | 152.40 | 1.50 | 0.8µm | 240Grit |
| 4" 101,6 x 2,0 mm | 101.60 | 152.40 | 152.40 | 2.00 | 0.8µm | 240Grit |

The information presented above is intended for general reference and product selection purposes. Specifications, features, and applications may vary depending on manufacturer and specific model.

Please consult the product manual or contact the supplier for detailed technical data and guidance tailored to your requirements. All images and descriptions are for illustrative purposes only and may not fully represent the actual product design.

Thank you!

Swiss Fittings Argentina

Telefon: +54 9 341 685 3540

E-Mail: info@swiss-fittings.com.ar | Website: www.swiss-fittings.com.ar