

## **3 PC Ball Valve full Bore F/F**

3-piece full bore ball valves are designed for reliable isolation in demanding industrial and commercial applications. The three-piece construction allows easy maintenance without removing the valve from the pipeline.

Featuring full bore (full port) design, they ensure minimal pressure drop and maximum flow efficiency.

### **KEY FEATURES:**

- Body Material: Stainless Steel (AISI 304 / 316)
- Design: 3-piece, bolted body for easy inline service
- Bore Type: Full Bore (Full Port) for unrestricted flow
- Connection Ends: FF (Flange to Flange, Flat Face)
- Working Pressure: PN 63, PSI 1000
- Temperature Range: -20°C to +180°C (varies with material and seal)
- Ball Material: Stainless Steel with mirror finish for smooth operation
- Sealing: PTFE
- Operation: Manual lever-operated (without mounting pad)

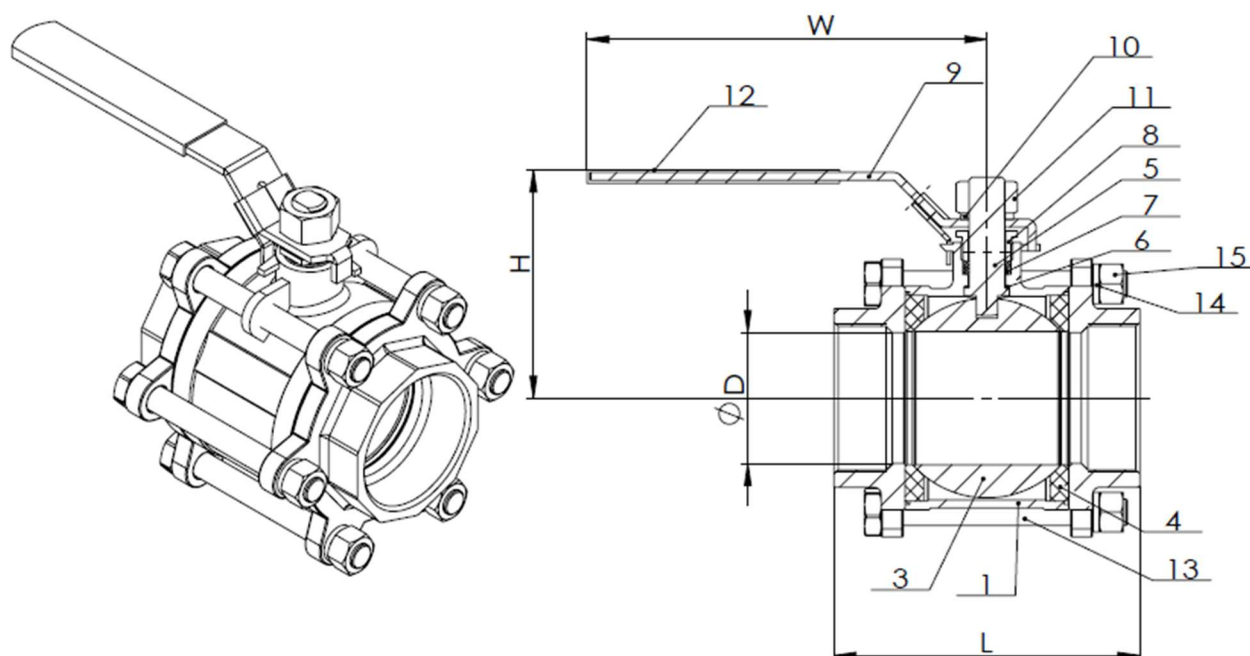


### **APPLICATION:**

The 3-Piece Ball Valve FF is widely used in industries requiring high-performance flow control and automation capability.

- Oil & Gas
- Chemical & Petrochemical Industries
- Water Treatment Plants
- Food & Beverage Processing
- Pharmaceuticals & Biotech
- Power Plants
- Marine and Offshore
- Mining and Slurry System
- General Industrial uses

## **DRAWINGS AND DIMENSIONS:**



Unit: mm				
Size	L	D	H	W
1/4" 13.85 mm	59.00	11.60	51.00	95.00
3/8" 17.2 mm	59.00	12.70	51.00	95.00
1/2" 21.34 mm	64.00	15.00	55.00	95.00
3/4" 26.6 mm	75.00	20.00	59.00	110.00
1" 33.4 mm	85.00	25.00	73.00	135.00
1 1/4" 42.2 mm	97.00	32.00	78.00	135.00
1 1/2" 48.3 mm	110.00	38.00	91.00	147.00
2" 60.3 mm	132.00	50.00	99.00	165.00



**PART AND MATERIAL LIST:**

Sr. No.	Part Name	Material	Qty
1	BODY	ASTM-CF8M-A351	1
2	CAP	ASTM-CF8M-A351	2
3	BALL	ASTM-CF8M-A351	1
4	BALL SEAT	PTFE	2
5	STEM	AISI 316	1
6	THRUST WASHER	PTFE	1
7	STEMPACKING	PTFE	2
8	GLAND NUT	AISI 304	1
9	HANDLE	AISI 304	1
10	STEM WASHER	AISI 304	1
11	STEM NUT	AISI 304	1
12	PLASTIC	PLASTIC	1
13	BOLT	AISI 304	6
14	SPRING WASHER	AISI 304	6
15	HEX NUT	AISI 304	6

The information presented above is intended for general reference and product selection purposes. Specifications, features, and applications may vary depending on manufacturer and specific model.

Please consult the product manual or contact the supplier for detailed technical data and guidance tailored to your requirements. All images and descriptions are for illustrative purposes only and may not fully represent the actual product design.

Thank you!