

## 2-PC Ball Valve – Nickel Plated, Chrome Ball, Full Port

The 2-piece ball valve is a robust and versatile shut-off valve designed for a wide range of industrial and commercial applications. Featuring a nickel-plated brass body and a hard chrome-plated ball, it ensures excellent corrosion resistance, smooth operation, and long service life.

### KEY FEATURES:

- Construction: 2-piece design for easy maintenance and replacement
- Body Material: Nickel-plated brass for enhanced corrosion resistance
- Ball: Chrome-plated brass
- Port Type: Full port (full bore) design for maximum flow and minimal pressure drop
- Seats: PTFE (Teflon) seats for chemical resistance and sealing performance
- Handle: Heavy-duty lever handle with vinyl grip for secure manual control
- Thread Ends: as per Rp EN 10226-1 & ISO 7-1



### APPLICATION:

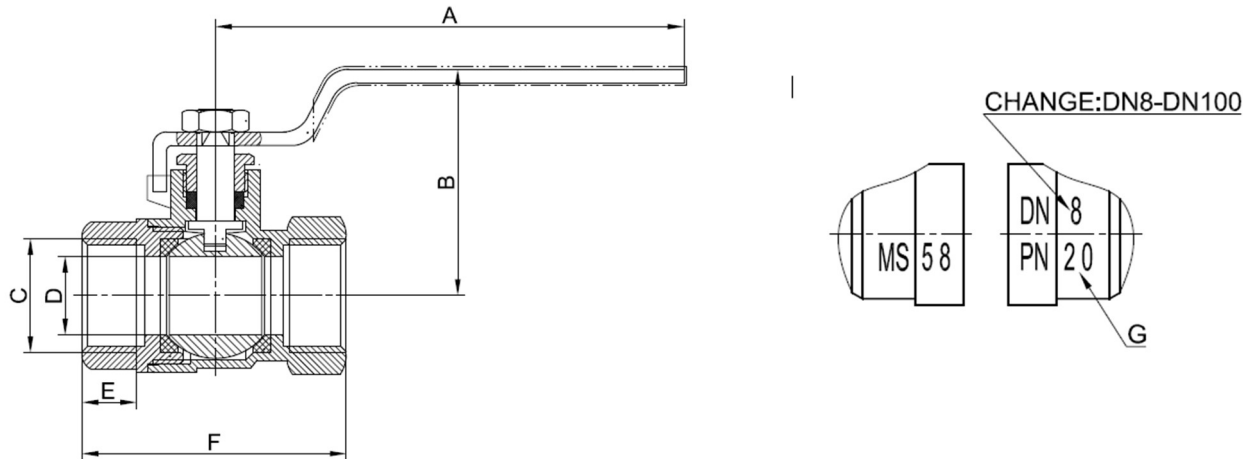
The 2-PC ball valve is ideal for **on/off flow control** in a wide range of industrial, commercial, and residential systems. Its **full port design** ensures minimal flow restriction, while the **nickel-plated body and chrome-plated ball** offer excellent corrosion resistance and durability.

### **Typical Applications Include:**

- **Water supply systems** – for domestic, commercial, and industrial use
- **HVAC systems** – controlling chilled or heated water flow
- **Compressed air lines** – reliable shut-off in pneumatic systems
- **Oil and fuel pipelines** – suitable for non-corrosive oils and fuels
- **Gas distribution networks** – for non-aggressive gases (LPG, natural gas)
- **Chemical processing systems** – for handling non-aggressive chemicals
- **Irrigation systems** – used in agricultural and landscaping water control
- **General-purpose plumbing and piping systems**

# SWISS FITTINGS

## DRAWINGS AND DIMENSIONS:



Unit: mm							
Size	A	B	C	D	E	F	G PN
1/4"	70.00	37.00	G 1/4"	9.00	7.20	39.00	20
3/8"	86.00	37.00	G 3/8"	9.70	8.00	41.50	
1/2"	86.00	41.50	G 1/2"	14.50	10.00	48.50	
3/4"	86.00	44.50	G 3/4"	19.00	11.00	56.00	
1"	104.00	50.50	G 1"	24.00	12.50	66.50	
1 1/4"	122.00	61.00	G 1 1/4"	30.00	13.50	74.70	30
1 1/2"	122.00	66.00	G 1 1/2"	37.00	14.50	85.50	
2"	152.00	85.00	G 2"	48.00	14.50	102.50	
2 1/2"	225.00	106.00	G 2 1/2"	60.50	20.00	126.00	25
3"	232.00	122.00	G 3"	73.00	24.00	147.00	
4"	304.00	140.00	G 4"	89.50	25.00	169.00	

The information presented above is intended for general reference and product selection purposes. Specifications, features, and applications may vary depending on manufacturer and specific model.

Please consult the product manual or contact the supplier for detailed technical data and guidance tailored to your requirements. All images and descriptions are for illustrative purposes only and may not fully represent the actual product design.

Thank you!

**Swiss Fittings Argentina**

Telefon: +54 9 341 685 3540

E-Mail: [info@swiss-fittings.com.ar](mailto:info@swiss-fittings.com.ar) | Website: [www.swiss-fittings.com.ar](http://www.swiss-fittings.com.ar)