



Stainless Steel Camlock

A camlock, also known as a cam and groove coupling, is a type of quick-connect coupling commonly used in industrial applications to connect or disconnect hose and pipe fittings efficiently. It is designed for quick installation without tools, they are widely used in industries like petroleum, chemical, agriculture, food processing, and water transport.

KEY FEATURES:

- Material: Stainless steel 304 and 316
- Quick and easy connection/disconnection
- No need for tools during operation
- Temperature Range: Varies by material, typically -20°C to +150°C
- Connection type: acc. to DIN 2999
- Standards Compliance: acc. to MIL-C27487 (This standard now called MIL A-A-59326)
- Secure and reliable seal
- Resistant to corrosion and abrasion (depending on material)

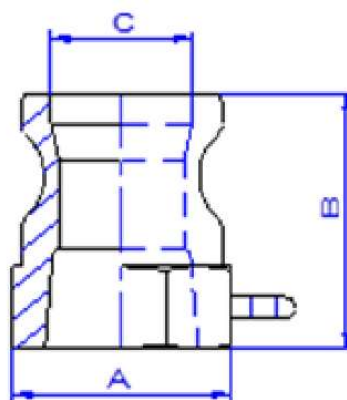
APPLICATION:

A camlocks commonly used in industrial applications to connect or disconnect hose and pipe fittings.

- Water and wastewater management
- Fuel and oil delivery
- Chemical processing
- Agricultural irrigation
- Food and beverage transfer

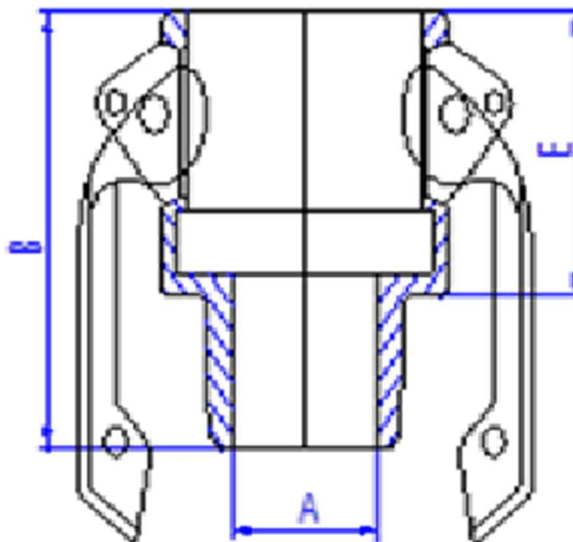
TYPE OF CAMLOCKS:

1- Camlock LNH - Type A



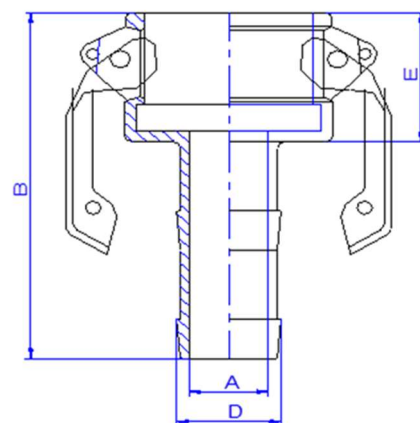
Unit: mm			
Size	A	B	C
1"	38.00	40.00	27.00
1 1/2"	56.00	51.00	43.00
2"	66.00	56.00	52.00
3"	94.00	67.00	76.00
4"	122.00	67.00	103.00

2- Camlock LCM - Type B



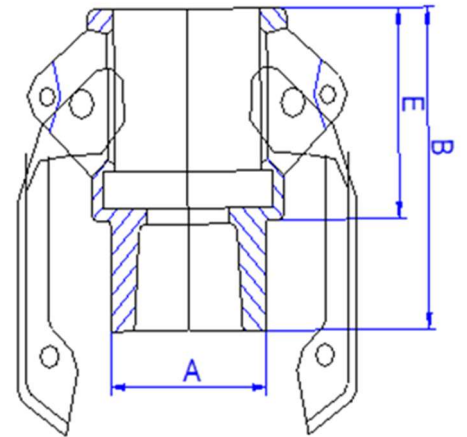
Unit: mm			
Size	A	B	E
1"	26.00	55.00	36.00
1 1/2"	39.00	68.00	44.00
2"	51.00	72.00	48.00
3"	75.00	86.00	53.00
4"	102.00	87.00	54.00

3- Camlock LCE - Type C



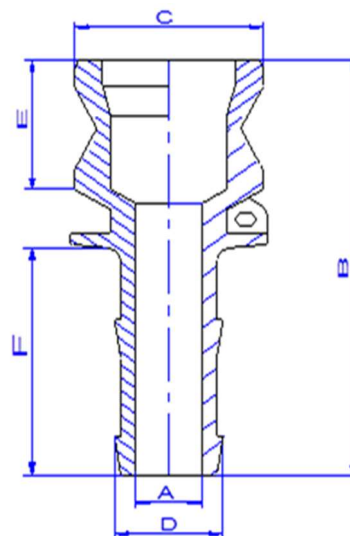
Unit: mm				
Size	A	B	D	E
1"	22.00	94.00	27.00	36.0.
1 1/2"	34.00	110.00	40.50	44.00
2"	46.00	120.00	53.50	49.00

4- Camlock LCH - Type D



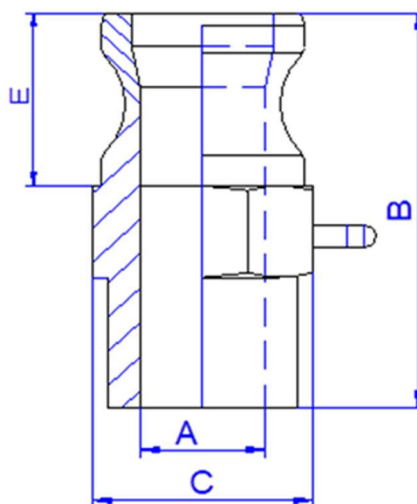
Unit: mm			
Size	A	B	E
1"	36.00	55.00	36.0
1 1/2"	52.00	65.00	44.00
2"	63.00	71.00	49.00
3"	93.00	83.00	53.00
4"	121.00	85.00	55.00

5. Camlock LNE - Type E



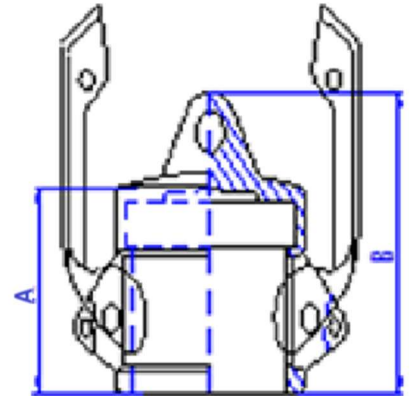
Unit: mm						
Size	A	B	C	D	E	F
1"	22.00	98.00	37.00	27.00	28.00	58.00
1 1/2"	34.00	114.00	53.00	40.00	37.00	63.00
2"	46.00	131.00	63.00	53.00	46.00	70.00

5- Camlock LNM - Type F



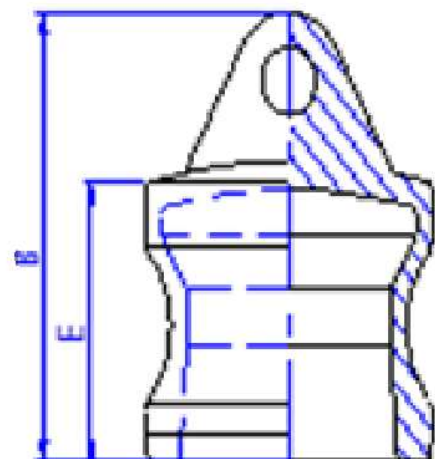
Unit: mm				
Size	A	B	C	E
1"	27.00	56.00	39.00	31.00
1 1/2"	40.00	71.00	56.00	39.00
2"	52.00	76.50	65.50	43.00
3"	80.00	90.00	94.00	49.00
4"	105.00	93.00	122.00	50.00

6- Camlock LTH - Type DC



Unit: mm		
Size	A	B
1"	36.00	50.00
1 1/2"	44.00	60.00
2"	48.00	66.00

7- Camlock LTM - Type DP





Unit: mm		
Size	B	E
1"	27.00	45.00
1 1/2"	38.00	55.00
2"	45.00	62.00

The information presented above is intended for general reference and product selection purposes. Specifications, features, and applications may vary depending on manufacturer and specific model.

Please consult the product manual or contact the supplier for detailed technical data and guidance tailored to your requirements. All images and descriptions are for illustrative purposes only and may not fully represent the actual product design.

Thank you!