

TEE Welded - ASTM A403 / ASME B16.9

The TEE is a stainless steel butt-weld pipe fitting used to combine or split fluid flow in a piping system. It conforms to ASTM A403 standards for material properties and ASME B16.9 for dimensions and fabrication. Available in both equal (straight) and reducing types, this fitting is widely used in critical applications requiring corrosion resistance and reliable mechanical performance.

KEY FEATURES:

- Type: TEE (Equal / Reducing), Butt-Welded
- Material Grade: ASTM A403 (WP304L and WP316L)
- Standard: ASME B16.9 (factory-made wrought steel fittings)
- Wall Thickness: SCH 10S, 40S, 80S
- Ends: Bevelled ends (as per ASME B16.25)
- Construction: Seamless or Welded

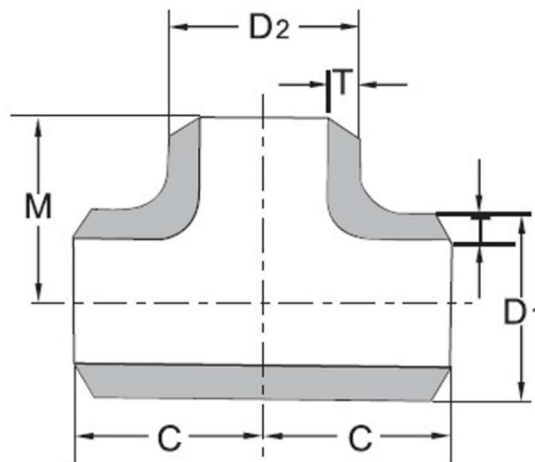


APPLICATION:

The Tee fitting is used to either combine or divide flow in stainless steel piping systems. Known for its corrosion resistance, strength, and reliable performance, it is essential in many industrial sectors.

- Chemical and petrochemical processing
- Oil and gas pipelines
- Power generation systems
- Water treatment and desalination plants
- Food and pharmaceutical industries

DRAWINGS AND DIMENSIONS:



SWISS FITTINGS

Unit: mm				
Size	D1 x D2	C	M	T
1/2" 21.34 x 2.11 mm SCH 10S	21.3 x 21.3	29.00	29.00	2.11
3/4" 26.67 x 2.11 mm SCH 10S	26.7 x 26.7	29.00	29.00	2.11
1" 33.40 x 2.77 mm SCH 10S	33.4 x 33.4	38.00	38.00	2.77
1 1/4" 42.2 x 2.77 mm SCH 10S	42.20 x 42.2	48.00	48.00	2.77
1 1/2" 48.30 x 2.0 mm	48.3 x 48.3	57.00	57.00	2.00
1 1/2" 48.3 x 2.77 mm SCH 10S	48.3 x 48.3	57.00	57.00	2.77
2" 60.30 x 2.77 mm SCH 10S	60.3 x 60.3	64.00	64.00	2.77

The information presented above is intended for general reference and product selection purposes. Specifications, features, and applications may vary depending on manufacturer and specific model.

Please consult the product manual or contact the supplier for detailed technical data and guidance tailored to your requirements. All images and descriptions are for illustrative purposes only and may not fully represent the actual product design.

Thank you!

Swiss Fittings Argentina

Telefon: +54 9 341 685 3540

E-Mail: info@swiss-fittings.com.ar | Website: www.swiss-fittings.com.ar